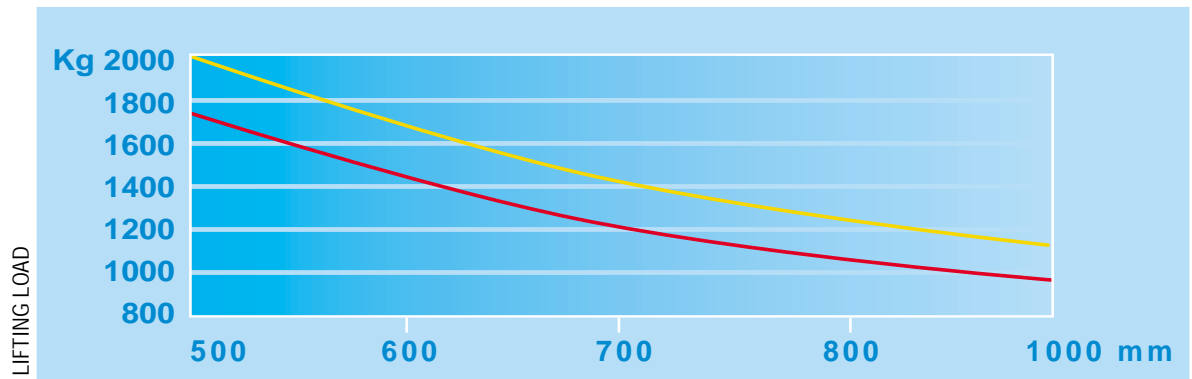


MYCROS



MYCROS 17,5 — MYCROS 20 —



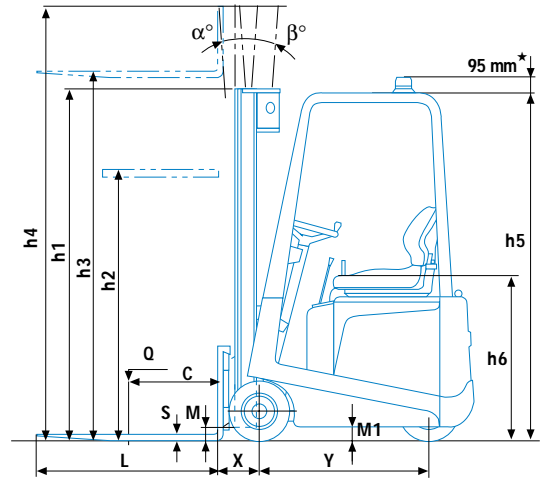
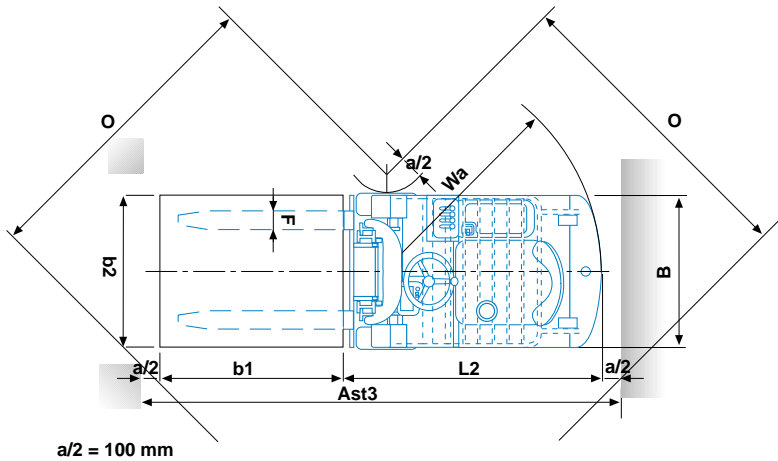
DISTANCE

MAST DETAILS

| HEIGHT | | STANDARD | | | DUPLEX GAL | | | TRIPLEX GAL | | |
|-----------------------|----|----------|-------|-------|------------|-------|-------|-------------|-------|-------|
| | | INCL. | INCL. | INCL. | INCL. | INCL. | INCL. | INCL. | INCL. | INCL. |
| Lifting | h3 | 3200 | 3800 | 4200 | 3200 | 3800 | 4200 | 4800 | 5700 | 6300 |
| Height mast collapsed | h1 | 2090 | 2390 | 2590 | 2090 | 2390 | 2590 | 2090 | 2390 | 2590 |
| Height mast extended | h4 | 3725 | 4325 | 4725 | 3725 | 4325 | 4725 | 5325 | 6225 | 6825 |
| Free lift | h2 | - | - | - | 1635 | 1935 | 2135 | 1635 | 1935 | 2135 |
| Width | B | 1060 | 1060 | 1120 | 1060 | 1060 | 1120 | 1120 | 1120 | 1160 |



MYCROS 17.5-20



SPECIFICATION SHEET

MYCROS 17.5 MYCROS 20

★ On demand installation of the flashlight inside the height of the overhead guard h5

| | CHARACTERISTICS | | MYCROS 17.5 | MYCROS 20 |
|----|--------------------|--|---------------------|---------------------|
| 1 | Manufacturer | Abbreviated form | V.MARIOTTI S.r.l. | V.MARIOTTI S.r.l. |
| 2 | Models | Manufacturer's model | MYCROS 17,5 | MYCROS 20 |
| 3 | Capacity | Q Lifting load | 1750 | 2000 |
| 4 | At load centre | C Distance | 500 | 500 |
| 5 | Type of drive | Electric (Battery) - Diesel - Fuel gas | electric | electric |
| 6 | Type of steering | Driver standing - driver sitting - outside | driver sitting | driver sitting |
| 7 | Tyres | V=Cushion - SE=Superel. front / rear | SE / SE | SE / SE |
| 8 | Wheels | Quantity (♦ =driven) front / rear | 2 / 1 ♦ | 2 / 1 ♦ |
| 9 | Lift | h3 Lift | 3200 | 3200 |
| 10 | | h2 Normal free lift (see Mast details) | on demand | on demand |
| 11 | Forks Fem II | Length(L) x Width(F) x Thickness(S) | 1000x130x35 | 1000x130x35 |
| 12 | Tilt | Of the mast- forward (α) / backward (β) | 3° / 7° | 3° / 7° |
| 13 | | L2 Length at the fork backrest | 1685 * | 1685 * |
| 14 | | B width | 1060 | 1060 |
| 15 | Overall dimensions | h1 Height, mast collapsed | 2090 | 2090 |
| 16 | | h4 Height, mast extended | 3725 | 3725 |
| 17 | | h5 Height overhead guard | 2060 | 2060 |
| 18 | | h6 height seat from floor | 1030 | 1030 |
| 19 | Turning radius | Wa | 1384 # | 1384 # |
| 20 | Distance of load | X From centre front axle | 305 * | 305 * |
| 21 | Width of aisle | O (b'xb²) 1200x800 - 1200x1000 | 1880 / 1930 | 1880 / 1930 |
| 22 | | Ast 3 (b'xb²) 1200x800 - 1200x1000 | 3135/ 3165 | 3135/ 3165 |
| 23 | Stability tests | Complying with EEC Directive 98/37/CE | yes | yes |
| 24 | Speeds | Driving with /without load | 8,5 / 9,5 | 8 / 9,5 |
| 25 | | Lifting with /without load | 0,28 / 0,42 | 0,26 / 0,42 |
| 26 | Draw- bar- pull | Lowering with /without load | adjustable | adjustable |
| 27 | | At the hook max with /without load | 5850 / 6500 | 5850 / 6500 |
| 28 | Gradeability | with /without load | 10 / 18 | 9 / 15 |
| 29 | | Max. with /without load | 14 / 20 | 13 / 20 |
| 30 | Weight | Truck, battery included | 3250 • | 3550 • |
| 31 | Axle load | Without load front / rear | 980 / 2270 | 1050 / 2500 |
| 32 | | With load front / rear | 4350 / 650 | 4900 / 650 |
| 33 | Wheels | Number front / rear | 2 / 1 | 2 / 1 |
| 34 | | Dimensions front | 200x50x10" | 200x50x10" |
| 35 | | Dimensions rear | 200x50x10" | 200x50x10" |
| 36 | Wheel base | Y min. / max. (variable) | 1120 / 1240 | 1120 / 1240 |
| 37 | Wheel track | Wheels centerline front | 890 | 860 |
| 38 | Ground clearance | M With load at the lowest point | 135 | 135 |
| 39 | | M1 With load of wheel base | 140 | 140 |
| 40 | Brakes | Service (foot) brake | hydraulic | hydraulic |
| 41 | | Hand parking brake | mechanical | mechanical |
| 42 | Battery | Type | Traction | Traction |
| 43 | | Volt/Ah (capacity at 5 hours' discharge) | 48 / 380 - 48 / 580 | 48 / 460 - 48 / 580 |
| 44 | | Weight | 600 • - 870 | 700 • - 870 |
| 45 | Power steering | Hydraulic - electronically controlled | yes | yes |
| 46 | Electric motors | Hourly output of driving motor | 6,5 | 6,5 |
| 47 | | Lifting motor, output | 8 | 8 |
| 48 | Traction Contr. | Electronic by microprocessors | yes | yes |
| 49 | Pump control | Electronic by microprocessors | yes | yes |
| 50 | Working Press. | For additional attachments | 180 | 205 |

Data showed are not binding and are liable to variations. The constructor reserves the right of changes without notice.

with mast in vertical position

* included side-shift

Ast = $Wa + \sqrt{(x + b1)^2 + (b2/2)^2} + a$